

MONTHLY MEMBERSHIP PROGRESS REPORT

District 19 L

Results as of: 3/31/2026

GMT:

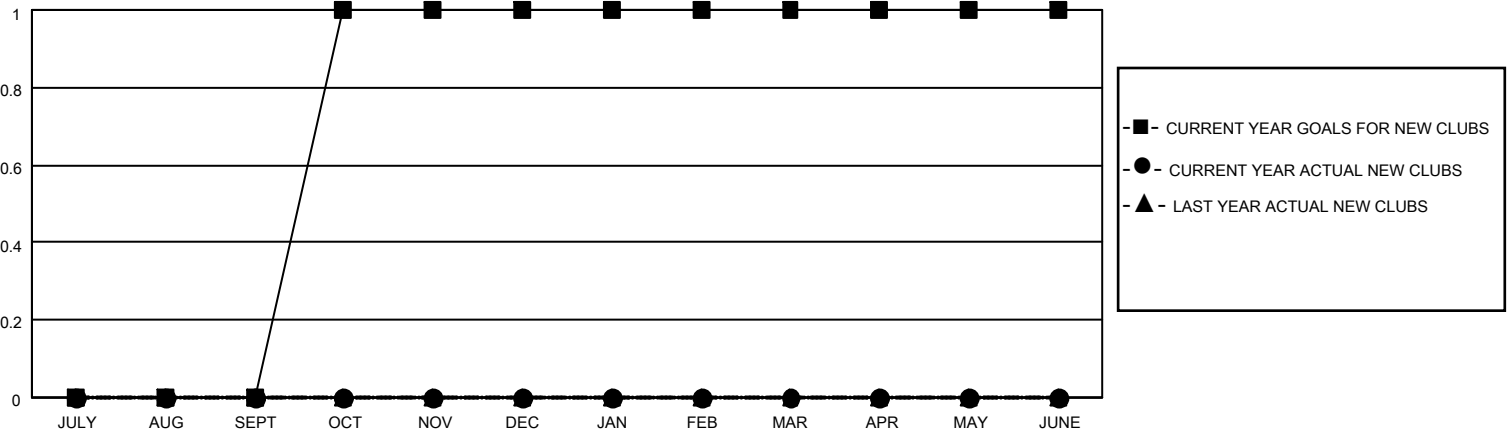
LOCATION BRITISH COLUMBIA

GMT CA

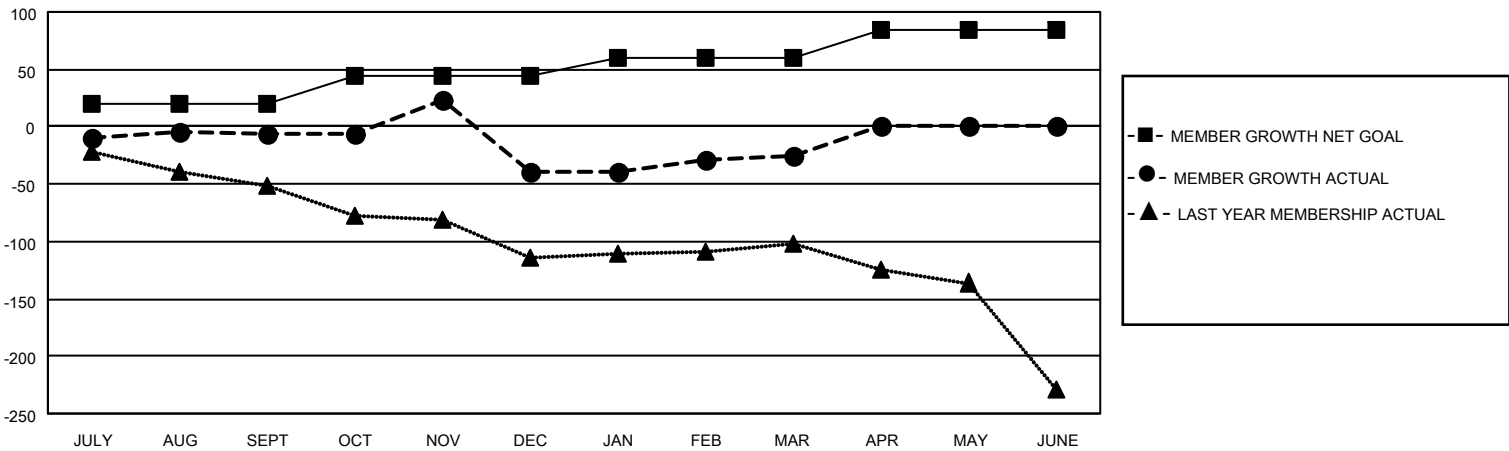
Clubs			
RESULTS FOR 2025-2026			
QUARTER	NEW CLUB GOAL	NEW CLUBS	DROPPED CLUBS
JULY/AUG/SEPT	0	0	1
OCT/NOV/DEC	1	0	0
JAN/FEB/MAR	0	0	0
APR/MAY/JUNE	0	0	0

Members			
RESULTS FOR 2025-2026			
QUARTER	MEMBER GROWTH NET GOAL	MEMBER GROWTH ACTUAL	DROPPED MEMBERS ACTUAL (including transfers)
JULY/AUG/SEPT	20	60	50
OCT/NOV/DEC	25	70	90
JAN/FEB/MAR	15	59	39
APR/MAY/JUNE	25	0	0

GOALS AND ACTUAL NEW CLUBS CUMULATIVE



GOALS AND ACTUAL MEMBERS CUMULATIVE



DROPPED CLUBS: 1	
DROPPED MEMBERS	
DECEASED	19
CLUB CANCELLED	1
OTHER	159
TOTAL	179

50 CLUBS OF 90 ADDED 1 OR MORE NEW MEMBERS

GENDER DISTRIBUTION	
MALE	1,032 (53.20%)
FEMALE	904 (46.60%)

[CLICK HERE FOR CUMULATIVE MEMBERSHIP DATA](#)

TOTAL FAMILY UNIT MEMBERS	263
FAMILY MEMBERS PAYING HALF DUES	133